

Science FLE Y3/4 What are the special functions of different parts of the body and what part does nutrition play?

What I have learnt before:

- We have discussed properties of materials and why some things are suited to a purpose.

Forever Facts

Animals, including humans, cannot make their own food.

Animals, including humans, need the right amount of nutrition.

Skeletons do three important jobs:

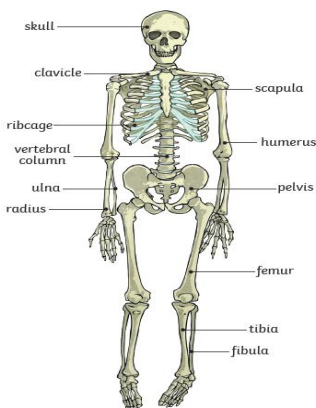
- protect organs inside the body;
- allow movement;
- support the body and stop it from falling on the floor.

Skeletal muscles work in pairs to move the bones they are attached to by taking turns to contract (get shorter) and relax (get longer).

Skills

Identify that animals, including humans, need the right amount of nutrition.

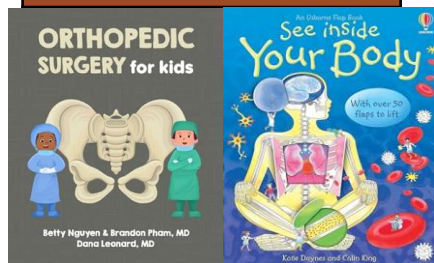
Identify that humans, and some animals, have skeletons and muscles for support, protection and movement.



Our Endpoint

I can explain some of the special functions of different parts of the body and the part that nutrition plays in this.

Exciting Books



Subject Specific Vocabulary

Skeleton	Is made of bone and grows as we grow.
Muscles	These are attached to bones by tendons and help them to move.
Joint	Allow the body to make movements. The body has many bones and are connected through the joints.
Cartilage	Is a connective tissue found in many areas of the body including joints between bones e.g. the elbows.
Tendon	Muscles are attached to the bone by tendons and work in pairs to allow for smooth movement.
Spine	Also known as your backbone, it is a strong, flexible column of ring-like bones that runs from your skull to your pelvis.
nutrition	Nutrition includes all the stuff that's in our food, such as vitamins, protein, fat, and carbohydrates. It's important to eat a variety of foods, including fruits, vegetables, dairy products, and grains, so you have what you need to grow and be healthy.

Personal development:

Develop an awareness and deeper understanding of the way our bodies work. Jobs you could do: working within science, education and healthcare.