



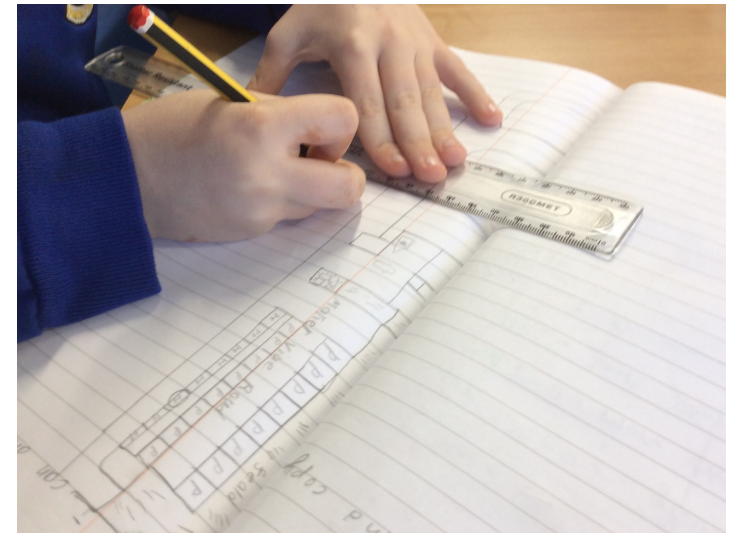
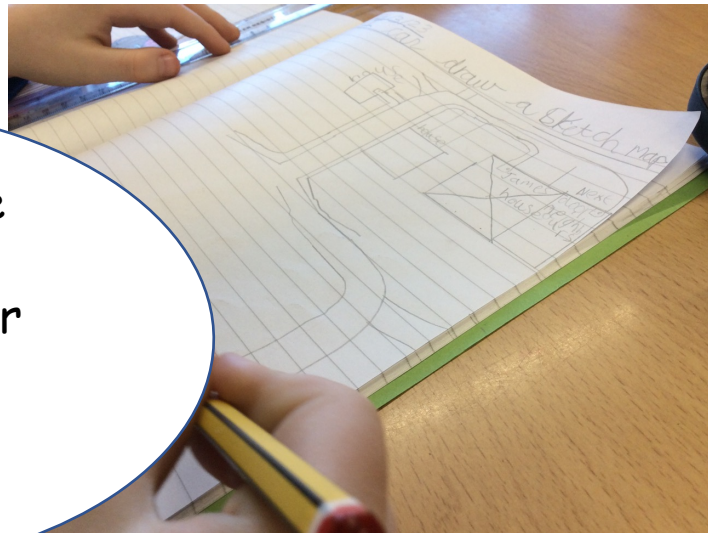
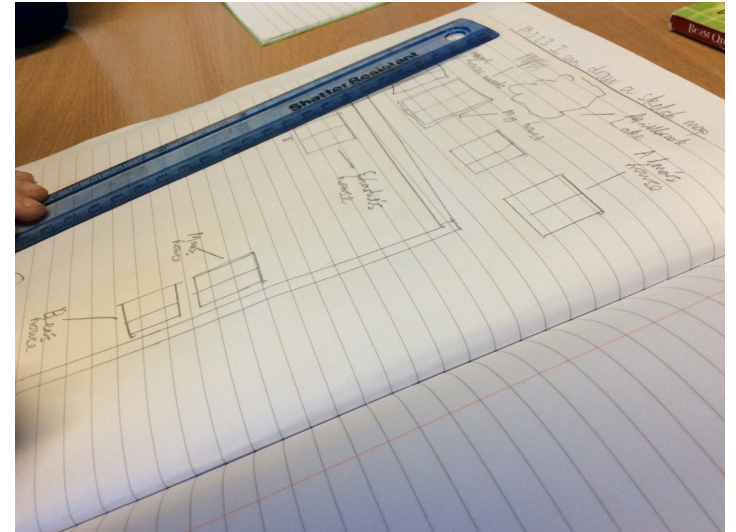
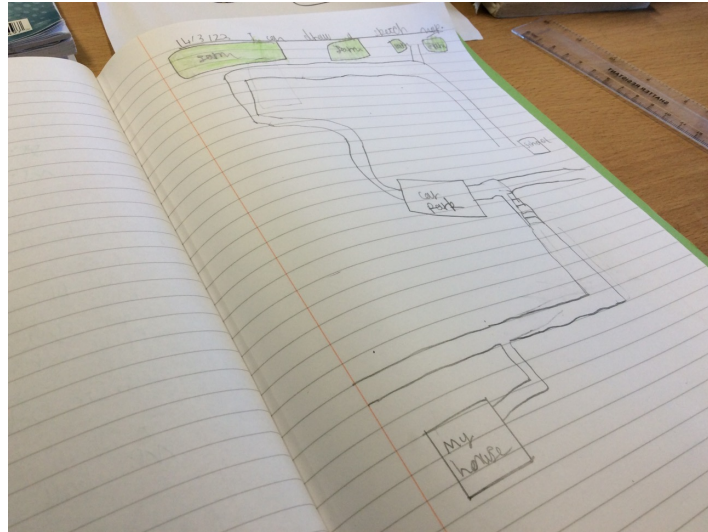
Geography.  
Sketch maps  
with a key.

Spring 2023

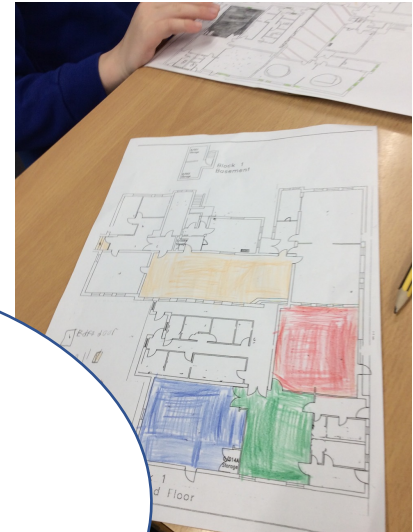
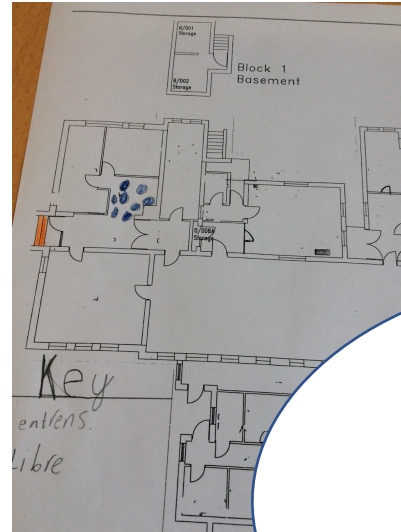


We created sketch maps to show the journey from our houses to school.

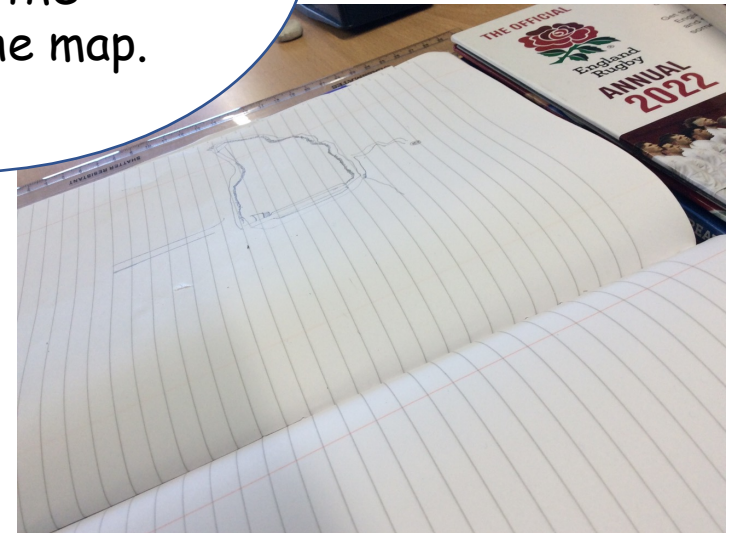
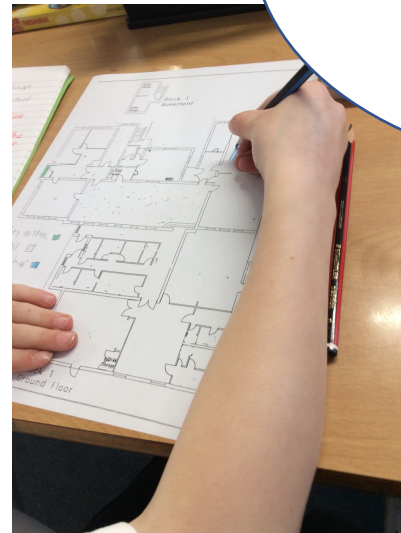
Some people live further away so it was harder for them.



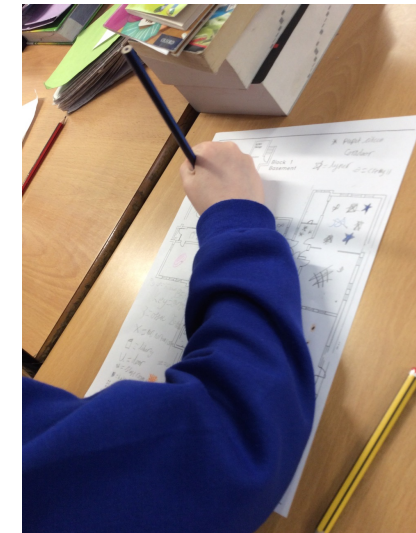
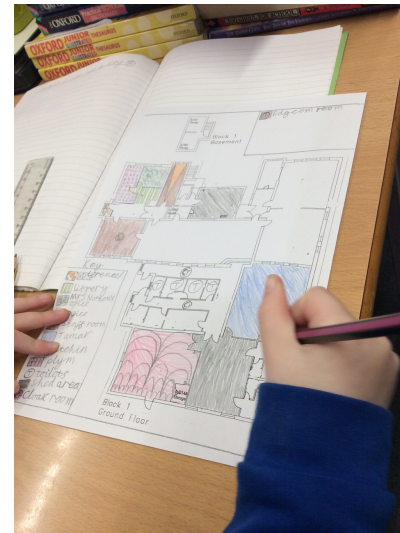
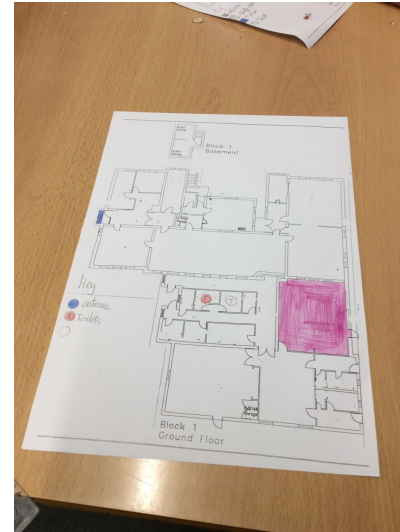
We used a plan of our school and used colours and symbols to create a key of where things are.



The key acts as a sort of 'code breaker' to help you crack the code of the map.

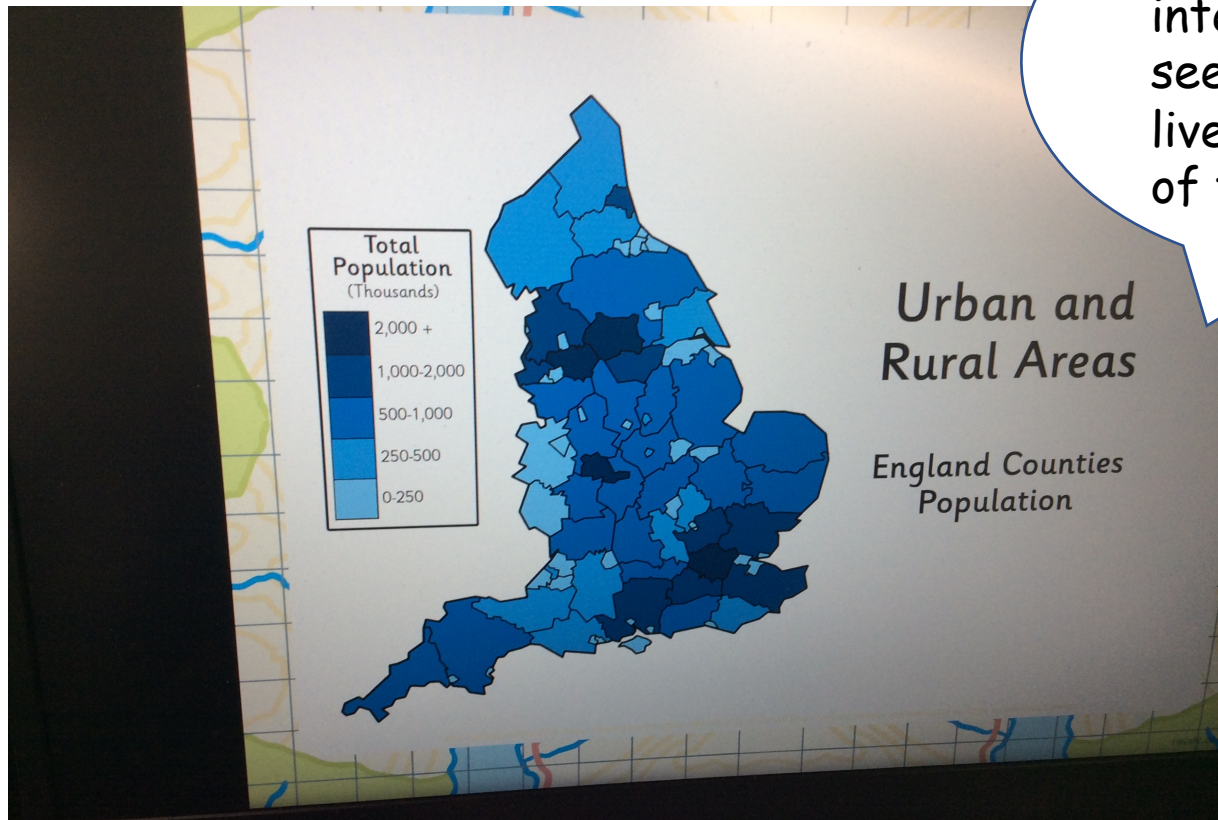




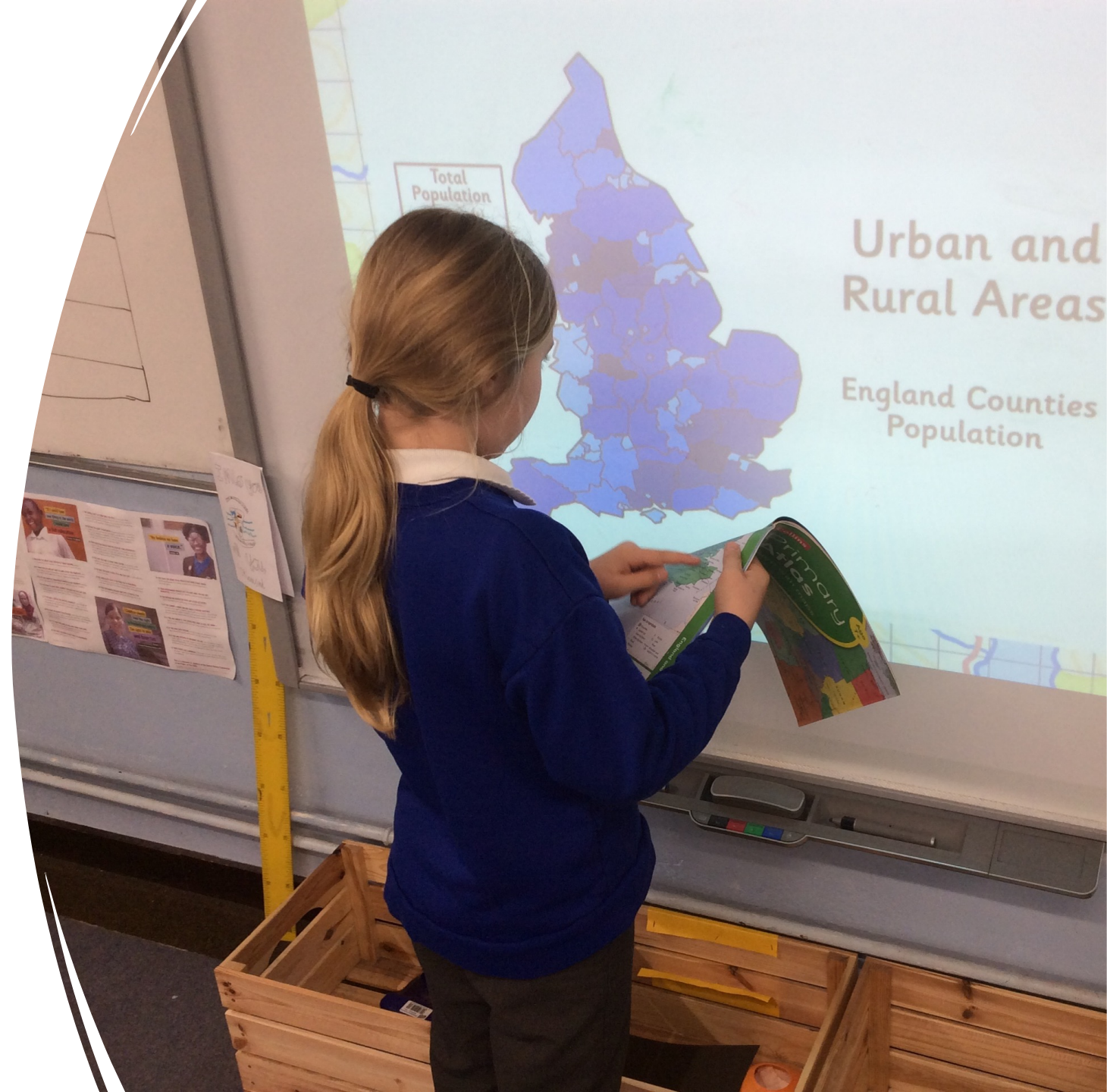


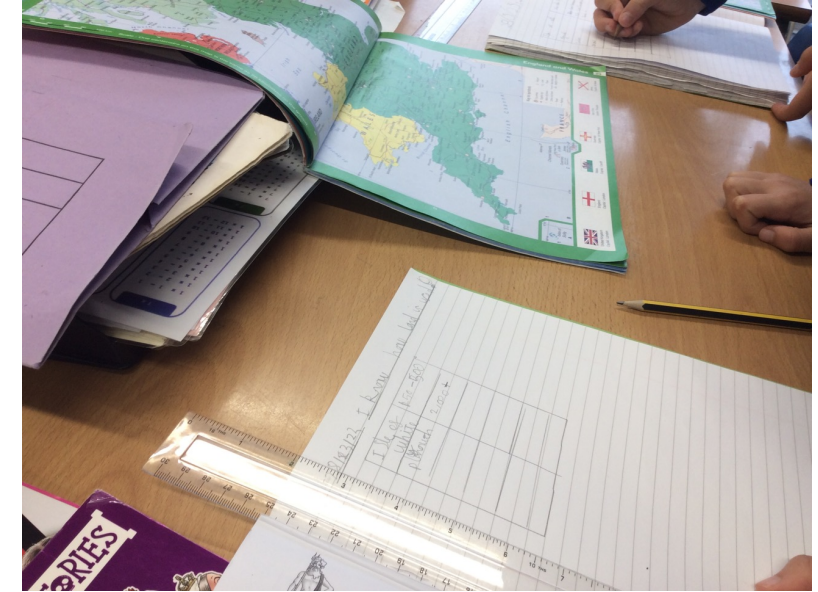
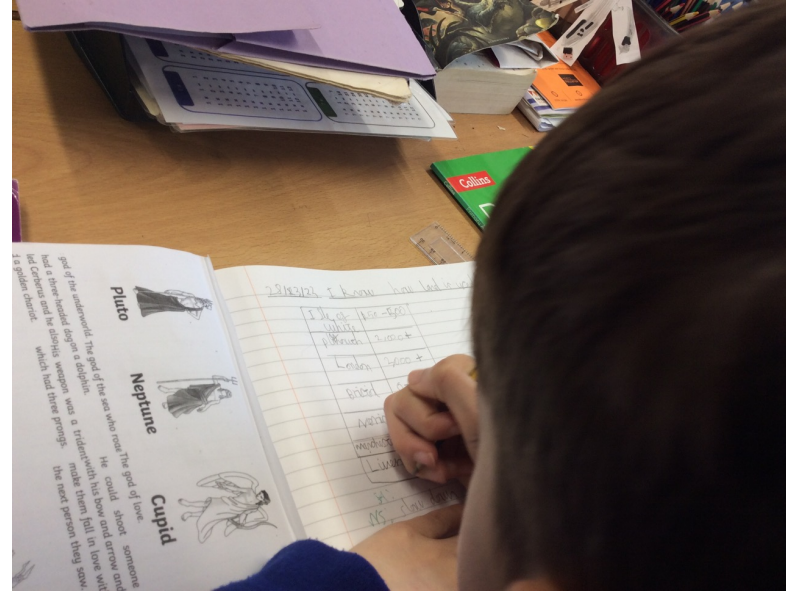
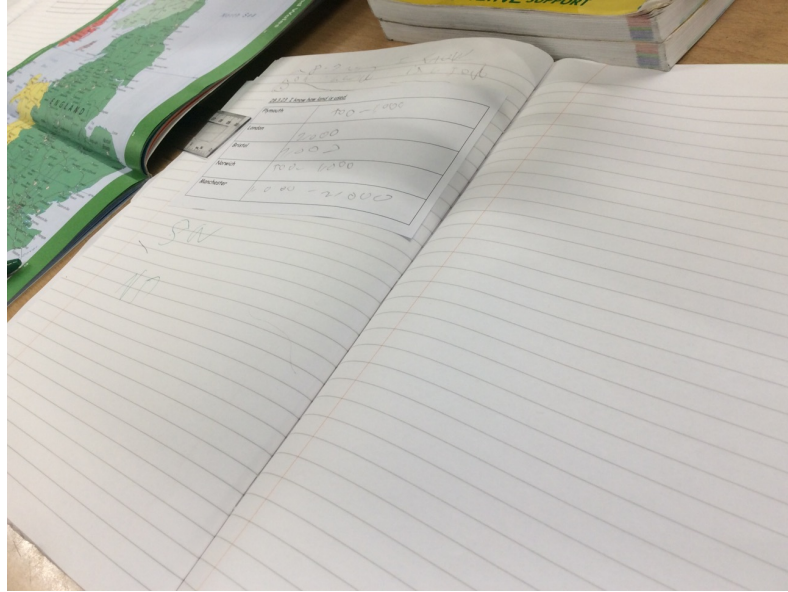
We used atlases to find cities and try and work out the most urban areas.

It was interesting seeing where we live on the map of the UK.







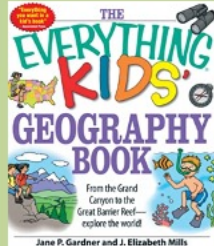
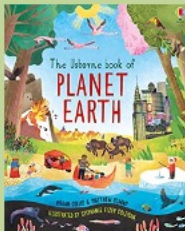




We created a chart so we could record the population size.

---



Geography		FLE 3/4	How can I create a sketch map with a key?															
<div>Cultural capital</div> <div>Children see variation in the land around them, both urban and rural. Children can use maps, atlases and digital maps. Children are exposed to possible careers in the environment and agriculture.</div>				<div>Skills</div> <div>Draw sketch maps with a key.</div> <div>Use atlases, maps and digital maps.</div> <div>Offer explanations for some features seen in fieldwork.</div> <div>Give views and judgements.</div>														
<div>Forever Facts</div> <div>Can describe land use in rural and urban areas</div> <div>Know that different types of agriculture use land differently.</div> <div>Can describe human and physical features of the environment.</div>	<div>Exciting Books</div> <div></div> <div></div>	<div>Subject Specific Vocabulary</div> <table><tr><td>Human features</td><td>are where people have impacted / changed the environment.</td></tr><tr><td>Physical features</td><td>are the features that nature has created.</td></tr><tr><td>Key / legend</td><td>Symbols on a map that represent features that can be seen.</td></tr><tr><td>Urban areas</td><td>areas where people live and work which results in lots of buildings</td></tr><tr><td>Rural areas</td><td>areas which have lots of agriculture, countryside and less people.</td></tr><tr><td>Settlement</td><td>where people live.</td></tr><tr><td>Agriculture</td><td>the proper name for farming, both crops and animals.</td></tr></table>			Human features	are where people have impacted / changed the environment.	Physical features	are the features that nature has created.	Key / legend	Symbols on a map that represent features that can be seen.	Urban areas	areas where people live and work which results in lots of buildings	Rural areas	areas which have lots of agriculture, countryside and less people.	Settlement	where people live.	Agriculture	the proper name for farming, both crops and animals.
Human features	are where people have impacted / changed the environment.																	
Physical features	are the features that nature has created.																	
Key / legend	Symbols on a map that represent features that can be seen.																	
Urban areas	areas where people live and work which results in lots of buildings																	
Rural areas	areas which have lots of agriculture, countryside and less people.																	
Settlement	where people live.																	
Agriculture	the proper name for farming, both crops and animals.																	
<div>What I have learnt before:</div> <div>Biomes and the rainforest and what is it like in Whitby? Local area and different countries of the UK.</div>		<div>Our Endpoint</div> <div>Create a sketch map with a</div> 