

GEOGRAPHY

Our school

What is an address?

A door
number.

Where
you live.

A house
number.

I walk my
doggies
around that
lake.

Cawsand
has a beach.

Millbrook is
close to
Cawsand.

Our School

The children discussed things that make us know this is our local area and then we looked at them on google maps: the lake, the park, the school etc. Even a few of our houses!



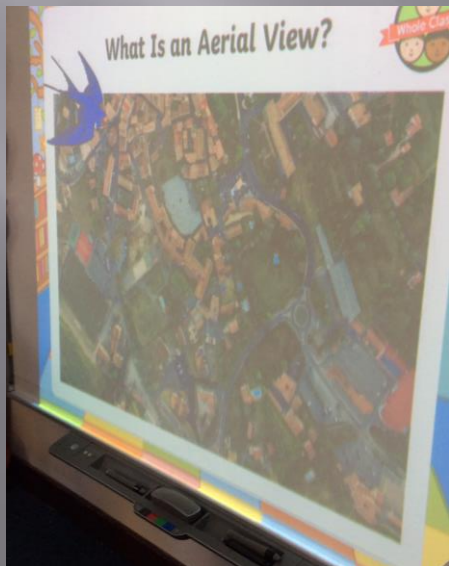
Milbrook has a
lake and a
park and a
skate park.



We had a go at
writing the school
address on our
passports – we
talked about what
each line meant.

I'm using sticks to be the chairs in the classroom.

Our classroom – aerial photographs.



It's like being in an aeroplane and looking down.

This is the tuff tray and this is your desk and this is the big table that we write on.

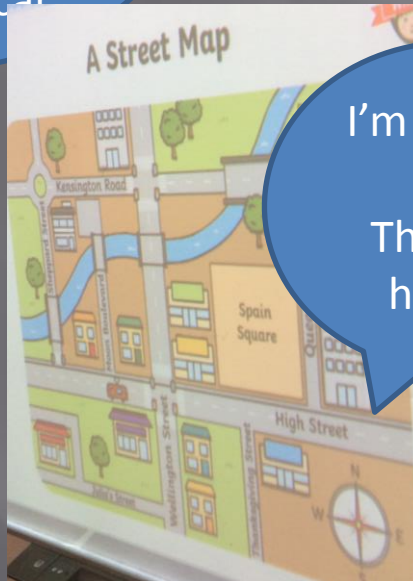
Where is our school?

Our school is in Cawsand. It is near the clock tower. It is at the top of a mountain(ous) hill.

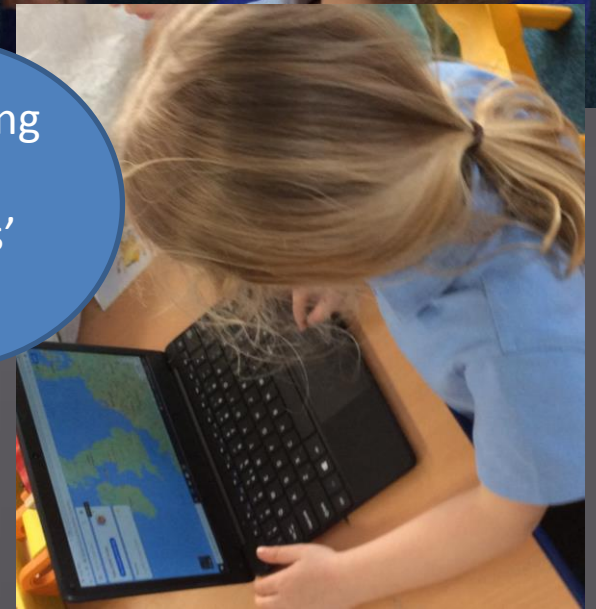
This shop is near my house.

A map is something that shows you locations in the area.

A map is something that tells you where to go. You can use one in your car.



I'm looking for Thomas' house.



Fieldwork – what can we hear, see, smell and touch around our school?



I can feel the wet grass on my hands.

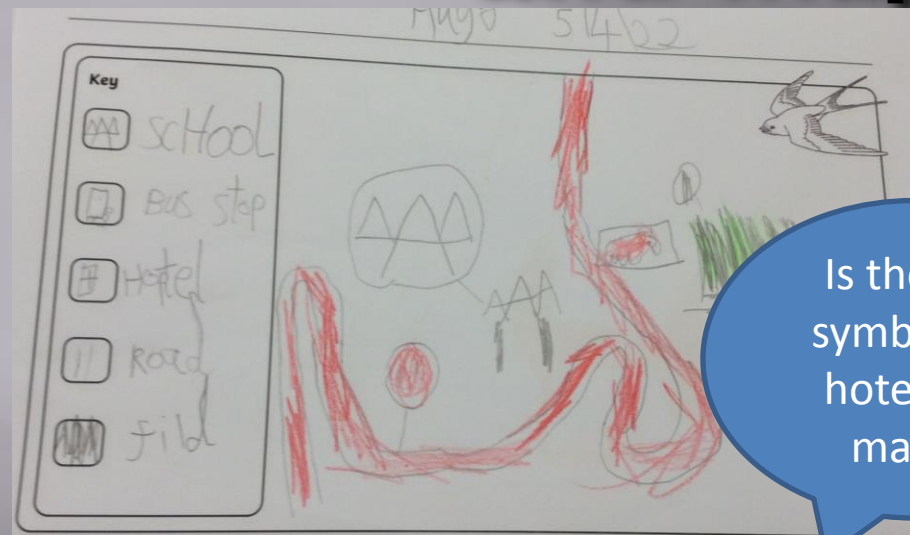
I can see so many fields!

I can hear cars going past on the road outside of the school and I can hear birds.



On the field I can hear some metal banging on the post from the playground.

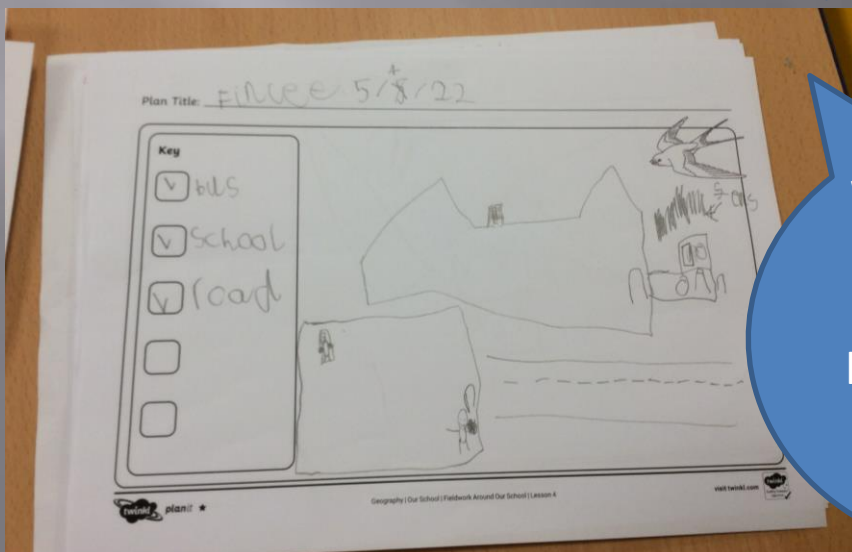
An aerial map of the school and map symbols



Is there a symbol for hotels on maps?



We definitely need a school symbol outside.



We should have a symbol for a road so people know that this is a road and they can be safe.

Designing our own symbol for a map



My map symbol is for a vets because I haven't seen one of those before.

My symbol is for a park and it has a big slide on it.



My map symbol is for the beach and it has sand and water on it so people know.

What we already know:

- There is a clock tower in Cawsand that was previously weather damaged.
- My School is in Cawsand, Cornwall.



Our Endpoint

A new map symbol that I have designed myself.

Forever Facts

I can recognise local places and key features in my area such as the lake in Millbrook, the Cawsand clock tower and the various parks.

I can understand and recognise some simple map symbols and what they represent. Eg, water, park, school and parking.

Some things exist naturally (rivers) and some things are made by humans (buildings).

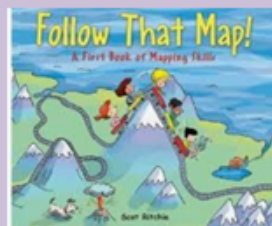
Skills

- I know how a map can be used and can use a simple map.
- I can begin to recognise places based on key landmarks/features.

Culture Capital

- Ability to use and understand a map.
- Know information about the local area that I live in and what things are natural or man made.

Exciting books



Subject Specific Vocabulary

Address	Specific information about where someone lives or where something is based.
Local area	The area of land surrounding you.
Map	A representation of an area of land or sea.
Map Key	A symbol that represents a real world thing.
Aerial view photograph	A view of a place from above.