

Class Cremyll Summer Term Week 12

Hey Cremlins,

How are you all? I hope that you enjoyed designing ingenious plans to help Mr and Mrs Grinling last week. This week, we're going to focus on lighthouses and find out about a very brave girl who lived in a lighthouse nearly 200 years ago! Our English learning is going to be part of everything we do this week so please remember that when you complete any writing you should use conjunctions (and, because, but, if, so, when), check your spellings, punctuation (A . , ? !), and that your sentences make sense in order to be GCOPS genius.



Remember to take photos of your learning or record it in your exercise book - it will be just like a learning journey! It's also been lovely to see your learning on Google Classroom too!

History

Why do we have lighthouses?

All around the world, lighthouses can be found on the coast or near the coast. Your task is to find out why they're needed and who looks after them. You could focus on one lighthouse and think of questions that might help you to learn about it, for example:

- Who looks after the lighthouse?
- How has the lighthouse changed since it was built?
- How do you get supplies to the lighthouse?
- What rooms are there inside the lighthouse?
- Are there any famous stories linked to the lighthouse?



You could always find out a little bit more about the lighthouses around the South West coast, for example:

- Smeaton's Tower on the Hoe in Plymouth
- Godrevy lighthouse in St Ives Bay
- Start Point lighthouse near Dartmouth.

History and PSHE

Who is Grace Darling?

Please read the comprehension sheet and answer the questions to find out about Grace Darling and her dad who was a lighthouse keeper. Now think carefully about what it must have been like for Grace - use these questions to help you:

How do you think Grace might have felt when she saw the boat on the rocks?

Can you imagine being in a small rowing boat in rough seas?

What does it mean to be brave?

Where we live in Cornwall, we are surrounded by the sea so it's really important to understand how to be water safe. The RNLI website has lots of interactive activities, videos and challenges to support your learning so why not try to earn a certificate!

<https://rnli.org/youth-education/education-resources>

How could you show friends and family how to stay safe around water?

Maths

This week, to link with our theme of lighthouses and weather forecasting, we are going to focus on measurement of time - this includes days of the week, knowing when things happen during the day and telling the time.

By the end of Year 1, we aim to be able to tell the time using 'o'clock and half past and by the end of Year 2, we aim to be able to tell the time to every 5 minutes including quarter past and quarter to. Here are some activities to help you practise:



- Sort the 'When' cards into different piles to show which activities are done at different times of the day or sort them into order from morning to night.
- Make your own clock and decorate it - practise telling the time every day.
- Keep a diary for a day - record when you have breakfast, snacks, lunch and tea using the time, for example, 'I had breakfast at half past eight.'
- Solve the time challenge cards.

There's also another mystery for you to solve this week - 'The Mystery of the Sandcastle Stamper'.

Geography

Our challenge this week is to become weather presenters!

Before you begin practising your presenting skills, I would like you to create a weather log. This will help you to spot patterns in the weather and get used to talking about the different types of weather that we have.

Here are a few ideas to think about:

- What might you use as a map? Could you draw a map?
- What weather symbols might you use?
- How will you check the temperature or pollen rating?
- Will you give any warnings about needing sun cream or maybe an umbrella?

When you present your weather forecast, it might be a good idea to write a script first - this is what they do on the television or radio. You can watch a forecast on the BBC Weather page to give you an idea of how it is done as well as look at the weather map in more detail:

<https://www.bbc.co.uk/weather>

The forecast usually has the same format each time:

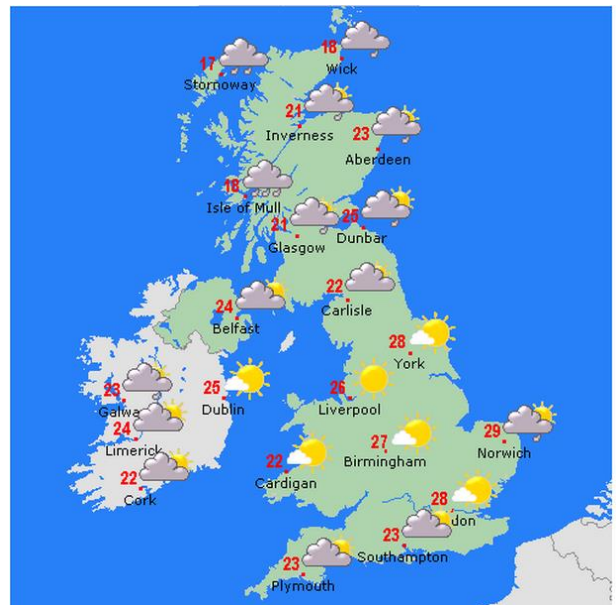
- Introduce yourself.
- A general forecast (for Cornwall).
- A detailed forecast (where you live).
- Weather warnings.
- A general forecast for the next few days.
- Thank the viewers for watching and say goodbye.

Enjoy presenting - I can't wait to hear about it!

PE

Aim to do something physical every day, for example,

- Imagine you have to climb all those steps up to the top of the lighthouse every morning and evening. What exercises could you do to make sure that your legs are strong?
- Join in with Joe Wicks on a Monday, Wednesday and Saturday morning at 9am.
- Dance along to a sea shanty.



DT and Art

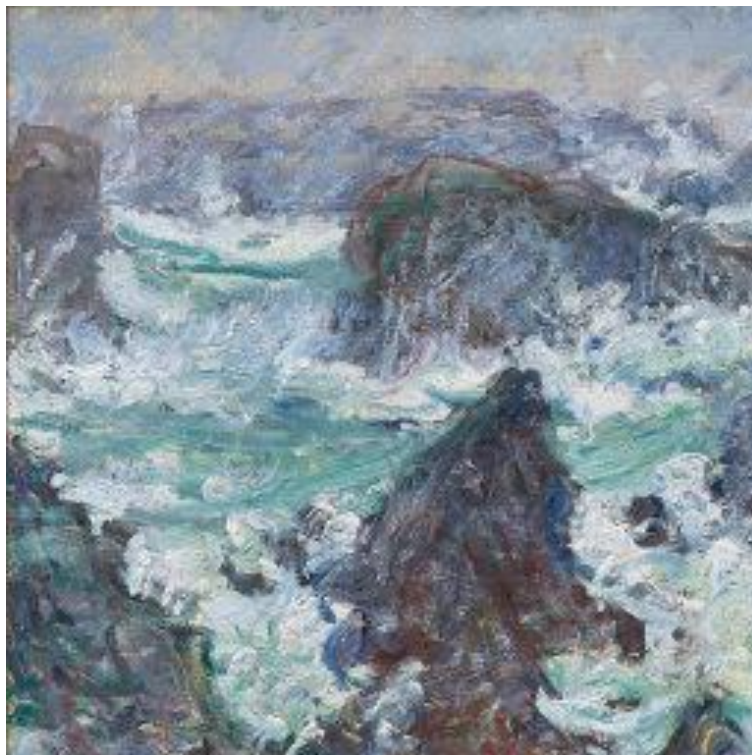
This week, why not take on the challenge of designing and making your own model of a lighthouse, either of the lighthouse you have learnt about or your own design.

Have a close look at the artwork below by Claude Monet - it's called 'Storm at Belle-Ile'.

How does the artwork make you feel?

Do you like it or not? Can you explain why?

How has Monet created a feeling of stormy seas?



Why not create your own stormy seas painting or picture to place underneath or behind your model lighthouse and imagine what it must be like to be a lighthouse keeper!

This week, BBC Bitesize Daily has lessons on fractions for Y1 and time for Y2 as well as a range of general punctuation, spelling and writing tasks. Follow this link for the online BBC Daily Bitesize homepage: <https://www.bbc.co.uk/bitesize>

Please remember, as Mrs Norton said, these are suggestions that you may like to use alongside your own ideas - do what's best for your family. Above anything else, keep reading.

Have a great week everyone! Mrs I and Mrs W.