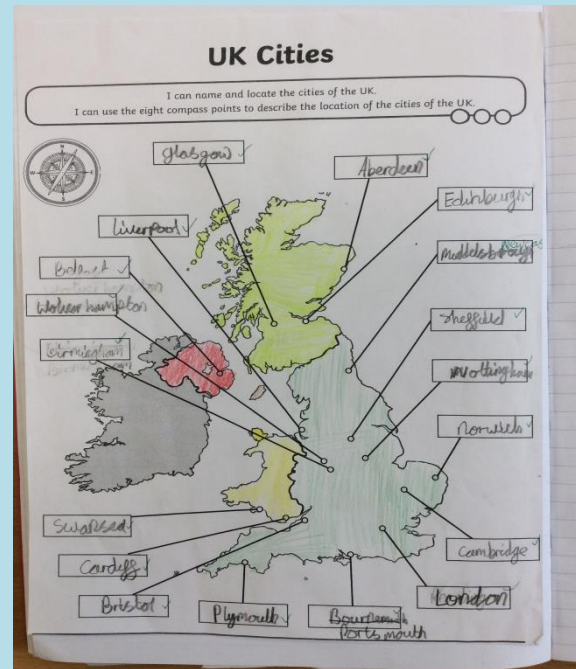


Class Tamar

Geography

UK

We located the countries and cities of the UK and labelled the capital cities of the countries of the UK.



- 1) From Belfast to Newcastle = East. ✓
- 2) From Sheffield to Portsmouth = South. ✓
- 3) From London to Portsmouth = Southwest. ✓
- 4) From Edinburgh to Newcastle = South East. ✓
- 5) From Nottingham to Liverpool = North West. ✓
- 6) From Cardiff to Sheffield = North East. ✓
- 7) From Belfast to London = South East. ✓
- 8) From Nottingham to Bristol = South West. ✓
- 9) From Norwich to Edinburgh = North West. ✓
- 10) From Liverpool to Newcastle = North East. ✓

We used the eight compass points to describe a location relative to another place and played a game as a class to identify the city from the clues we were given.

We used an atlas to search for the names of the seas surrounding the UK. We also searched for some of the UK's main rivers. We spent some time identifying the seas that the different rivers flowed to around the UK.

The Seas Around Us

Do you know where each label should go?

What clues might help us?

Irish Sea

English Channel

North Sea

Atlantic Ocean



A map of the United Kingdom and Ireland, colored in light green, set against a blue background representing the surrounding seas. The map is used for a labeling activity.

Where Do Rivers Go?

Can you find the River Thames?

Where does it start?

Where does it end?

What do you notice about where the rivers start and end?



A map of the United Kingdom showing major rivers in blue. The rivers are labeled with their names: Tyne, Ure, Great Ouse, Mersey, Trent, Severn, Avon, Thames, and others. The map is used for a river identification activity.



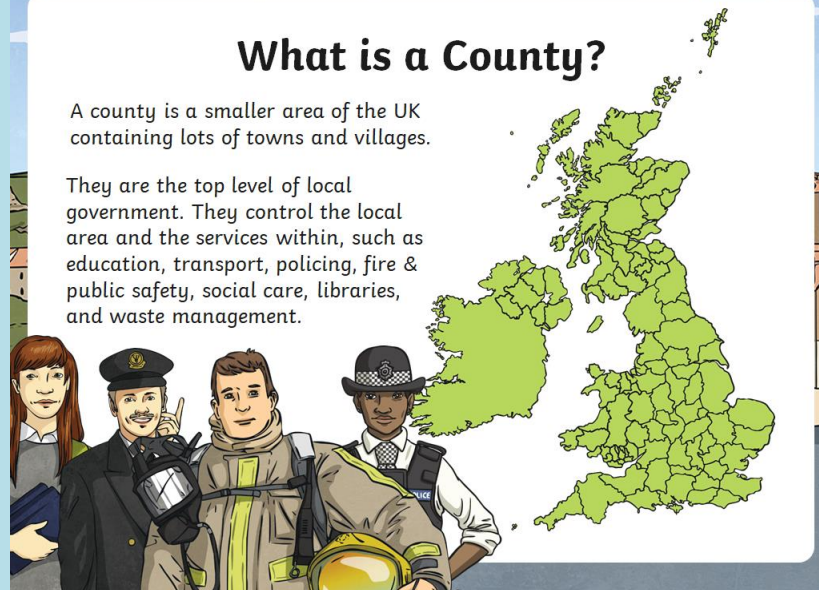
We learnt about what a county is and were able to locate the counties near to us. We did some research about Cornwall and shared some facts!



What is a County?

A county is a smaller area of the UK containing lots of towns and villages.

They are the top level of local government. They control the local area and the services within, such as education, transport, policing, fire & public safety, social care, libraries, and waste management.





Forever Facts

- Understand and use the concept of reciprocal link between physical and human features.
- Understand the different uses of different places.
- To work out a location using a range of information.

Skills

- To use maps / atlases to show physical and human features.
- To use contents and index pages of an atlas.
- To use compass points to build on knowledge of the UK and the wider world.

Exciting Books



Our Endpoint

To name and locate countries and cities in the UK.

Subject Specific Vocabulary

county	A small area of the UK containing lots of towns and villages.
prime meridian	An imaginary line which divides the earth into eastern and western hemispheres.
immigration	People moving to another country to live there permanently.
UK	The United Kingdom of Great Britain and Northern Ireland.
Great Britain	England, Scotland and Wales.
landmark	A feature of the landscape or area that is easily recognised.
millennium	A time period of 1000 years. The New Millennium started 1 st January 2000.

SMSC: Spiritual – the study of real people in real places means that it constantly links and develops students spiritually. Moral – the study of real people in real places means that it constantly links and develops students spiritually. Social – collaborating as a group and this collaborative learning continues throughout. Cultural – looks at various cultures and their influences across the world as well as more local studies and their cultural awareness is developed as a result.