

Back to Earth with a Bump Maths

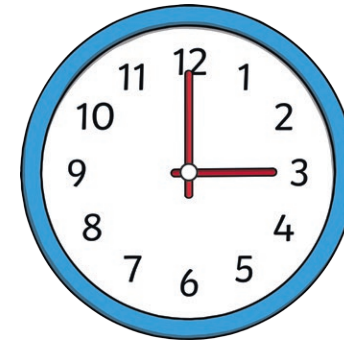
Challenge Cards



Back to Earth with a Bump - Maths



1. Mission Control contact Hal at 3 o'clock to tell him about tonight's mission. It is due to take place in 6 and a half hours. What time is blast off?



twinkl.com

Back to Earth with a Bump - Maths



2. Hal completes 19 hours of space travel. Mission Control send him a present for completing a whole days' worth of space travel. Are they right? Explain your answer.



twinkl.com

Back to Earth with a Bump - Maths

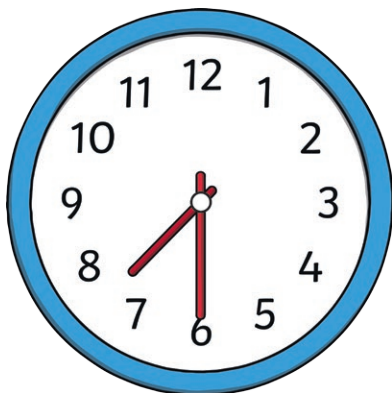


3. Hal has 2 hours to complete a new mission. He thinks the mission will take 60 minutes. Is he right? Explain your answer.



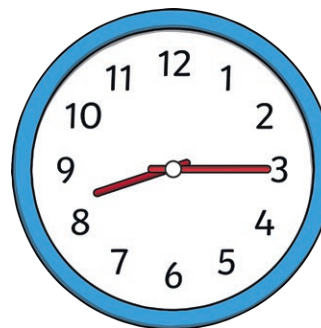
twinkl.com

4. Hal brushes his teeth at half past 7 and falls asleep in bed 45 minutes later. At what time does he fall asleep?

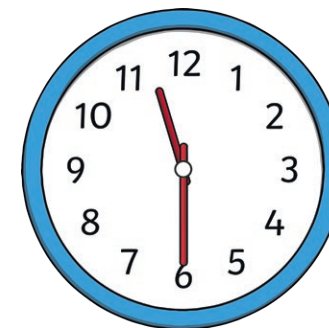


twinkl.com

5. How long did Hal's mission last?



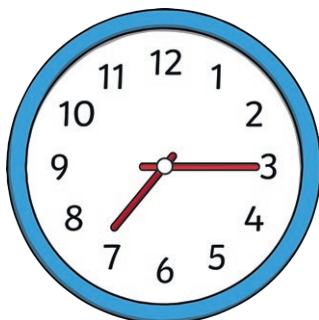
Time on Hal's clock when he
blasts off in the evening.



Time on Hal's clock when he
returns home that night.

twinkl.com

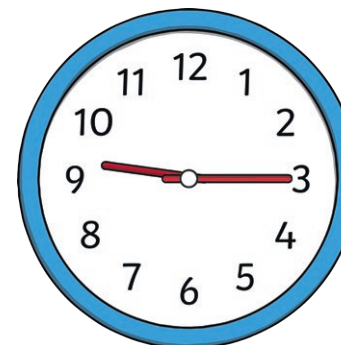
6. The time on Venus is six hours ahead of the time on Saturn. What time would it be on Saturn?



Time on Venus.

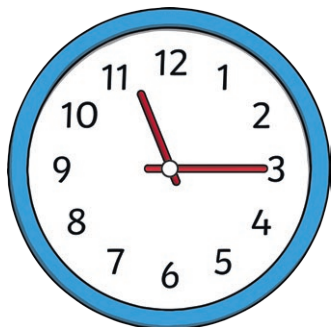
twinkl.com

7. When exploring the planets in our solar system, Hal leaves Mars at quarter past 9. It takes him 3 hours and 20 minutes to reach Neptune. At what time does he arrive?



twinkl.com

8. Hal returns from one of his missions at quarter past 11 at night. His dad gets him up at half past 7 in the morning. If he falls asleep straight away, how much sleep will he get?



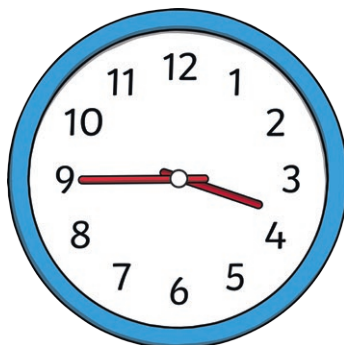
twinkl.com

9. After hours of space travel, Hal's watch is now 15 minutes slow. What time should it say?



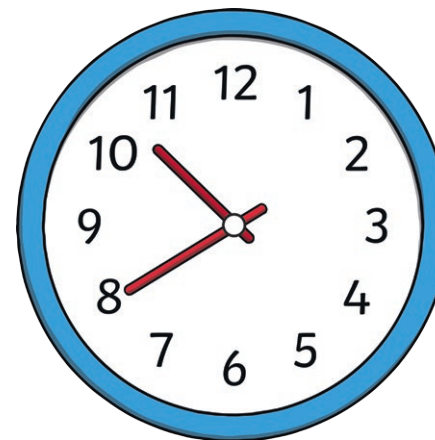
twinkl.com

10. Hal set off at 3:45 on his latest mission. It is due to take 5 hours but he gets delayed for 25 minutes by an asteroid storm. At what time does he arrive back?



twinkl.com

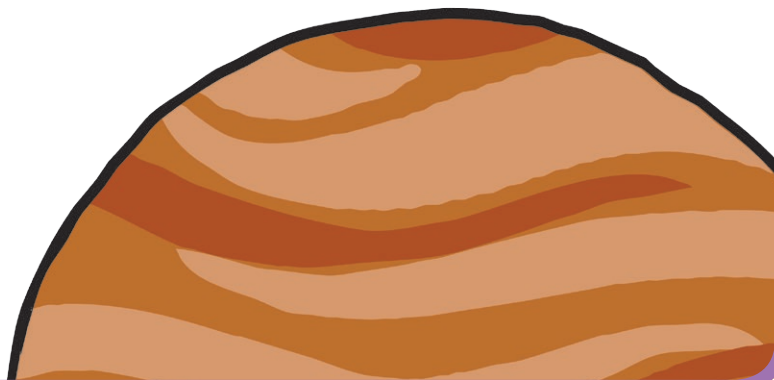
11. If it took Hal 4 and a quarter hours to travel to Mars, at what time did he arrive?



twinkl.com



12. Hal travelled to Jupiter to examine the planet. The mission lasted for 13 hours. The next day, he travelled to Venus and the mission took half as long. How long did it take?



twinkl.com

- | | |
|---|-------------------------------|
| 1. half past 9 | 7. twenty-five to 1 or 12:35 |
| 2. No. There are 24 hours in one day. | 8. 8 hours and 15 minutes |
| 3. No. 60 minutes would only be 1 hour. | 9. twenty-five past 6 or 6:25 |
| 4. quarter past 8 | 10. ten past 9 or 9:10 |
| 5. 3 hours and 15 minutes | 11. five to 3 or 2:55 |
| 6. quarter past 1 | 12. 6 and a half hours |

twinkl.com