

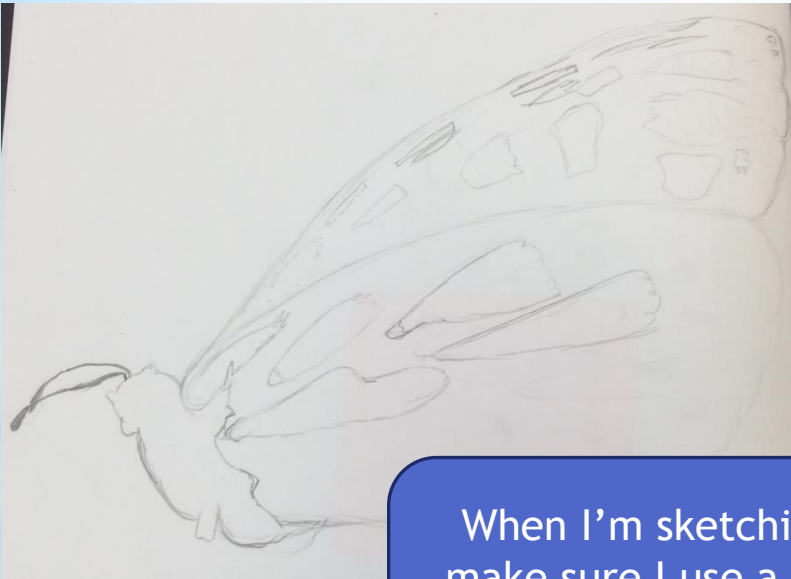
# Class Tamar

## Art

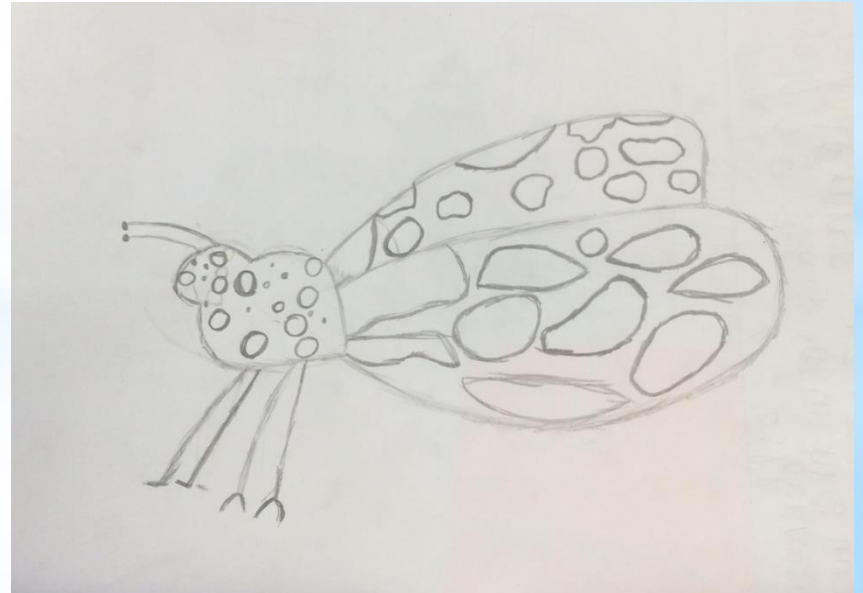
## Insects

# Drawing in pencil

*We carefully observed a close up image of a butterfly and had a go at sketching.*



When I'm sketching I make sure I use a light hand so that I can fix any mistakes easily.



# Drawing in colour

*We used the same image to talk about colour. We spent some time talking about what colours we could see and had a go at completing the image ourselves.*



SA: I am confident with drawing in colour.

NS: To do an entire drawing in colour.



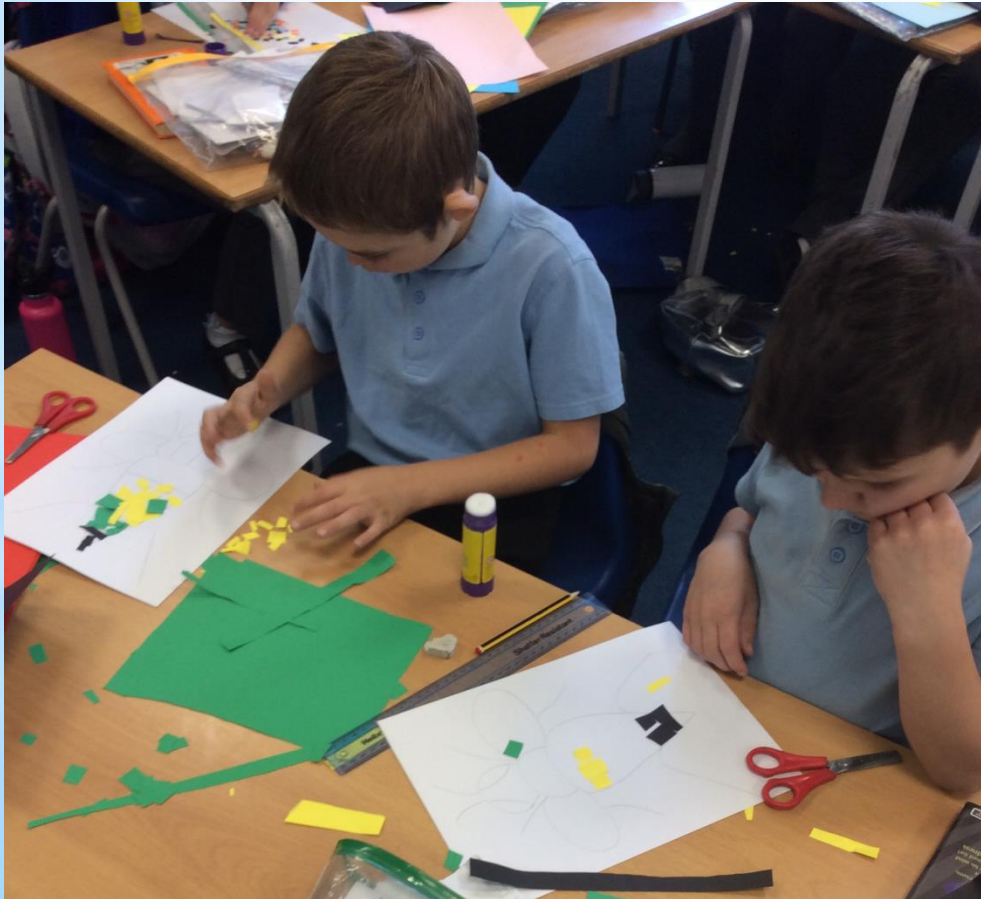
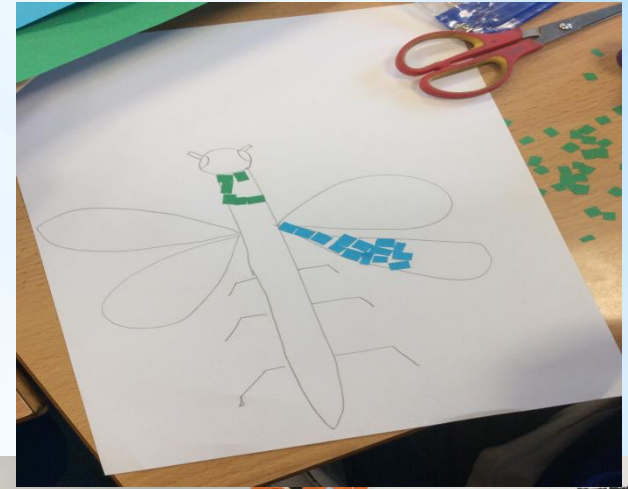
SA: I have done well to do a good color Mach.

NS: I have youst completed To do a good color mach.

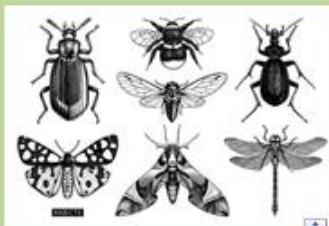


# Insect mosaics

*We spent a few of our art session designing and creating an insect mosaic. We cut each square ourselves and stuck these onto our outline of an insect.*



It took a lot of resilience and enthusiasm for learning to get our final mosaic finished!



### Forever Facts

All insects have 3 body parts: thorax, abdomen and head.

Spiders are not insects, but spiders and insects are arthropods. Unlike insects, spiders do not have antennae.

Louise Bourgeois' is a French-American artist. Her nickname was 'Spiderwoman' because of the spider sculptures that she made. The largest spider was called Maman and reached over 9 metres tall.

Jennifer Angus is a Canadian artist known for arranging insects arranged in ornamental patterns. Angus hopes that her work will make people interested in insects so that more people will help to fight against the destruction of their habitats.

### Skills

I can use my sketchbook to record and review ideas.

I can sketch a picture based on observation

I can plan and make a 3D model.

I can learn about great artists.

### Exciting Books



### Our Endpoint

To create a 3D sculpture of an insect.

### Subject Specific Vocabulary

Smudge	Smudging is a technique to achieve gradations in shade and tone.
Texture	How smooth or rough a painting or artwork may look or feel.
Tone	The lightness or darkness of something, this could be a shade or how dark or light a colour looks.
Pattern	Repeating a colour or a shade to create an effect of movement or rhythm.
Shape	Different shapes in artwork with different shading to create 3D and 2D effects.
Line	Lines create an image, these lines can be lighter and darker when sketching.
Form	A 3D sculpture form.

**SMSC:** *Spiritual – consider the world around them starting at school. Moral – reflecting on moral decisions which have an impact on insects and their habitats. Social – working cooperatively, having opportunities to give and receive peer feedback. Cultural – gain an appreciation of different art.*